

**Anti-MEK7 MAP2K7 Rabbit Monoclonal Antibody**  
**Catalog # ABO13466****Specification****Anti-MEK7 MAP2K7 Rabbit Monoclonal Antibody - Product Information**

Application	WB, IHC, IF, ICC, IP, FC
Primary Accession	<a href="#">O14733</a>
Host	Rabbit
Isotype	Rabbit IgG
Reactivity	Rat, Human, Mouse
Clonality	Monoclonal
Format	Liquid

**Description**

Anti-MEK7 MAP2K7 Rabbit Monoclonal Antibody . Tested in WB, IHC, ICC/IF, IP, Flow Cytometry applications. This antibody reacts with Human, Mouse, Rat.

**Anti-MEK7 MAP2K7 Rabbit Monoclonal Antibody - Additional Information**

**Gene ID** 5609

**Other Names**

Dual specificity mitogen-activated protein kinase kinase 7, MAP kinase kinase 7, MAPKK 7, 2.7.12.2, JNK-activating kinase 2, MAPK/ERK kinase 7, MEK 7, Stress-activated protein kinase kinase 4, SAPK kinase 4, SAPKK-4, SAPKK4, c-Jun N-terminal kinase kinase 2, JNK kinase 2, JNKK 2, MAP2K7, JNKK2, MEK7, MKK7, PRKMK7, SKK4

**Calculated MW**

47485 MW KDa

**Application Details**

WB 1:1000-1:2000<br>IHC 1:50-1:200<br>ICC/IF 1:50-1:200<br>IP 1:40<br>FC 1:50

**Subcellular Localization**

Nucleus. Cytoplasm.

**Tissue Specificity**

Ubiquitous; with highest level of expression in skeletal muscle. Isoform 3 is found at low levels in placenta, fetal liver, and skeletal muscle..

**Contents**

Rabbit IgG in phosphate buffered saline, pH 7.4, 150mM NaCl, 0.02% sodium azide and 50% glycerol, 0.4-0.5mg/ml BSA.

**Immunogen**

A synthesized peptide derived from human MEK7

**Purification**

Affinity-chromatography

**Storage**

**Store at -20°C for one year. For short term storage and frequent use, store at 4°C for up to one month. Avoid repeated freeze-thaw cycles.**

**Anti-MEK7 MAP2K7 Rabbit Monoclonal Antibody - Protein Information**

**Name** MAP2K7

**Synonyms** JNKK2, MEK7, MKK7, PRKMK7, SKK4

**Function**

Dual specificity protein kinase which acts as an essential component of the MAP kinase signal transduction pathway. Essential component of the stress-activated protein kinase/c-Jun N-terminal kinase (SAP/JNK) signaling pathway. With MAP2K4/MKK4, is the one of the only known kinase to directly activate the stress-activated protein kinase/c-Jun N-terminal kinases MAPK8/JNK1, MAPK9/JNK2 and MAPK10/JNK3. MAP2K4/MKK4 and MAP2K7/MKK7 both activate the JNKs by phosphorylation, but they differ in their preference for the phosphorylation site in the Thr-Pro-Tyr motif. MAP2K4/MKK4 shows preference for phosphorylation of the Tyr residue and MAP2K7/MKK7 for the Thr residue. The monophosphorylation of JNKs on the Thr residue is sufficient to increase JNK activity indicating that MAP2K7/MKK7 is important to trigger JNK activity, while the additional phosphorylation of the Tyr residue by MAP2K4/MKK4 ensures optimal JNK activation. Has a specific role in JNK signal transduction pathway activated by pro-inflammatory cytokines. The MKK/JNK signaling pathway is also involved in mitochondrial death signaling pathway, including the release cytochrome c, leading to apoptosis. Part of a non-canonical MAPK signaling pathway, composed of the upstream MAP3K12 kinase and downstream MAP kinases MAPK1/ERK2 and MAPK3/ERK1, that enhances the AP-1-mediated transcription of APP in response to APOE ([PubMed:<a href="http://www.uniprot.org/citations/28111074" target="\\_blank">28111074</a>](http://www.uniprot.org/citations/28111074)).

**Cellular Location**

Nucleus. Cytoplasm.

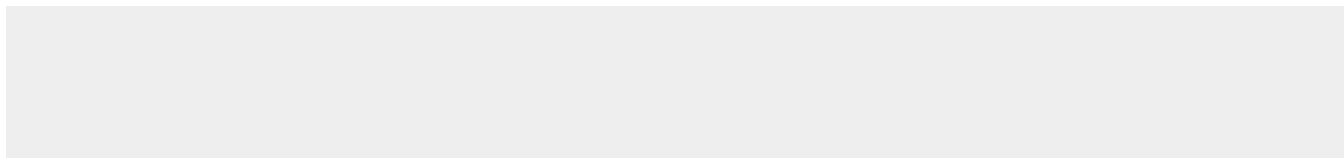
**Tissue Location**

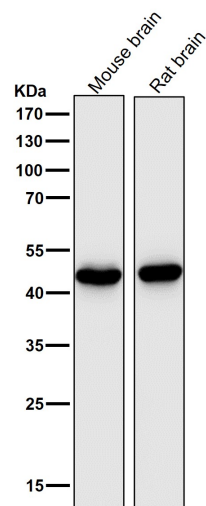
Ubiquitous; with highest level of expression in skeletal muscle. Isoform 3 is found at low levels in placenta, fetal liver, and skeletal muscle.

**Anti-MEK7 MAP2K7 Rabbit Monoclonal Antibody - Protocols**

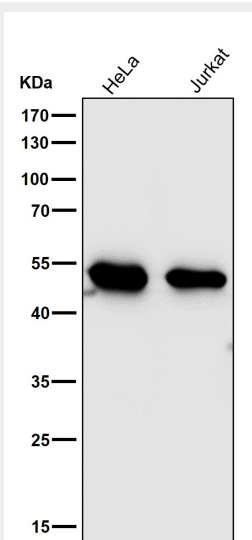
Provided below are standard protocols that you may find useful for product applications.

- [Western Blot](#)
- [Blocking Peptides](#)
- [Dot Blot](#)
- [Immunohistochemistry](#)
- [Immunofluorescence](#)
- [Immunoprecipitation](#)
- [Flow Cytometry](#)
- [Cell Culture](#)

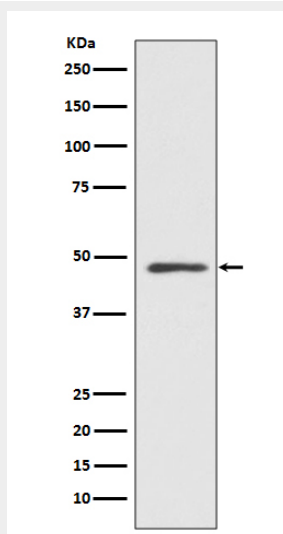
**Anti-MEK7 MAP2K7 Rabbit Monoclonal Antibody - Images**



All lanes use the Antibody at 1:6K dilution for 1 hour at room temperature.



All lanes use the Antibody at 1:6K dilution for 1 hour at room temperature.



Western blot analysis of MEK5 expression in HeLa cell lysate.